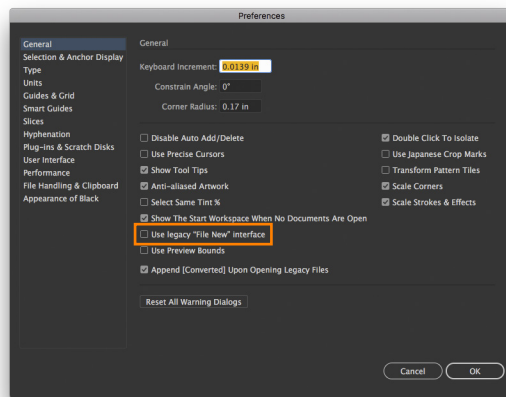


# Adobe Illustrator CC 2018 Preferences

Recommended custom settings to get the most for your creative workflow.

Use the application menu, Illustrator CC > Preferences... or ⌘K



## General (⌘K)

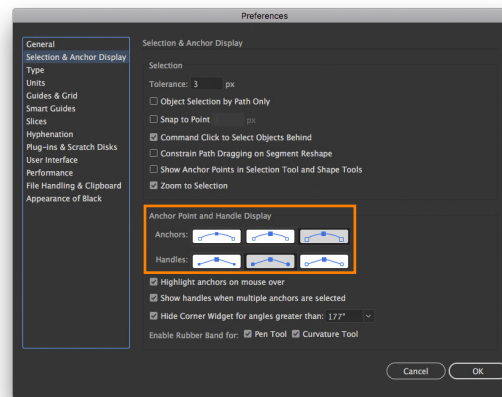
**Use legacy “File New” interface** – enable if you prefer to use a streamlined interface when creating new documents

★ **Best Practice** – it’s *best practice* quitting Illustrator after setting preferences to *lock in* your custom settings. Launch Illustrator again and get busy with your creative workflow.

### ★ Restoring Default Preferences:

Press and hold **Command + Option + Shift** while launching Illustrator.

You’ll get a prompt asking if you would like to reset the default preferences.



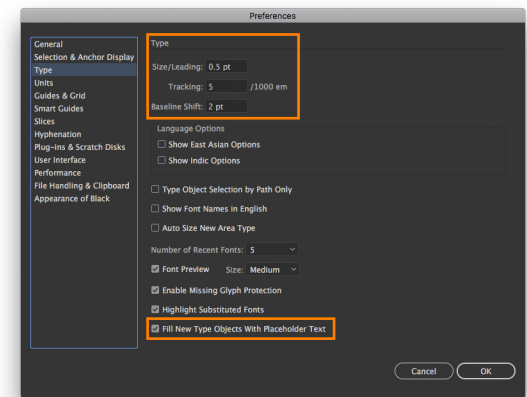
## Selection & Anchor Display

**Anchor Point and Handle Display:**

**Anchors** – select third option for larger handles

**Handles** – second option is default – solid fills for handles

Both are easier on the eyes :)



## Type

**Size/Leading** – enter 0.5 pt for exceptional control when using keyboard shortcuts, Option + Up/Down Arrows

**Tracking** – enter 5/1000 em for exceptional control when using keyboard shortcuts, Option + Left/Right Arrows for kerning and tracking

**Baseline Shift** – 2 pt (default)

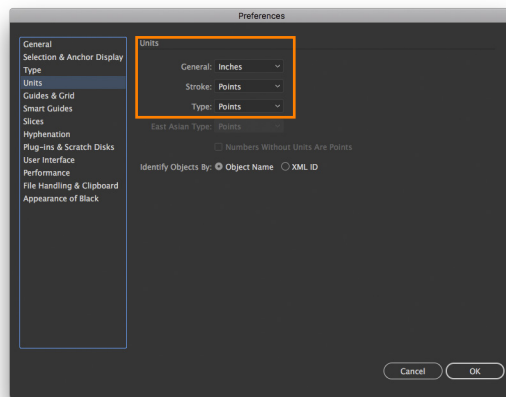
**Fill New Type Objects With Placeholder Text** – enabled by default, disable to create empty text objects

★ **About ems** – a unit of measurement; an em unit is the width of a capital M in the selected font & point size

**Bonus: About ens** – another unit of measurement; an en unit is the width of a capital N in the selected font & point size

# Adobe Illustrator CC 2018 Preferences

Recommended custom settings to get the most for your creative workflow.  
 Use the application menu, Illustrator CC > Preferences... or **⌘ K**



## Units (⌘,)

**General** – menu options of *points, picas, inches, millimeters* and *pixels* – select *inches* in the USA :)

**Stroke** – points is the default with menu options of *points, picas, inches, millimeters* and *pixels*

**Type** – points is the default with menu options of *points, inches, millimeters* and *pixels*

### About Points (pt)

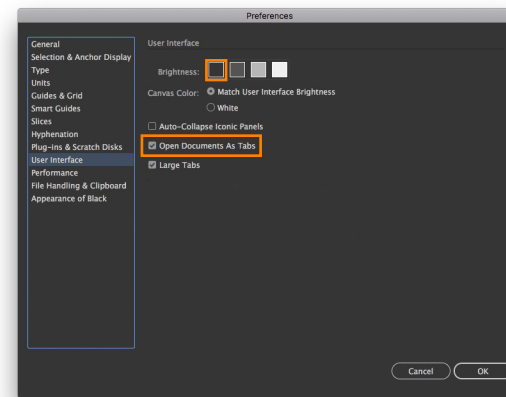
Points are a unit of measurement used in page layout and graphic design. You probably don't think about points, but you use them everyday in applications like email, Microsoft® Word® and others to specify text size.

72 points = 1 inch

1 point = 1/72 inch

Type is set at 12 points in your average text book.

14 points is the default size for type on Web pages.



## User Interface

**Brightness** – dark side or light side – the choice is yours

**Open Documents as Tabs** – enabled by default

### Points to Inches Conversion

72 points = 1 inch

54 points = .75 inches or 3/4 inch

36 points = .5 inches or 1/2 inch

18 points = .25 inches or 1/4 inch

9 points = .125 inches or 1/8 inch

4.5 points = .0625 inches or 1/16 inch

3 points = .0417 inches